

EDUCATION GUIDE TO ASSISTIVE TECHNOLOGY

AUTUMN 2011





IT'S ALL ABOUT

Welcome to the new Microlink Educational Catalogue for teachers who want to make the most of assistive technology to support their pupils.

Microlink has provided assistive technology services to schools, colleges and universities since 1992. It is a founding member of the British Assistive Technology Association and continues to help lobby for the rights and interests of those needing assistive technology. Microlink also works closely with the British Dyslexia Association.

It is perhaps indicative of the dedication and culture within Microlink that people who have benefitted from its products are now working for the company.

This catalogue offers examples of how technology supports learners and details of the products used.

Microlink can help teachers and schools with the assessment of individuals and identification of appropriate equipment, as well as training and on-going support.

This catalogue showcases the most popular products, particularly for learners who need help and support with reading and writing. Please visit www.microlinkpc.com. The site also contains more advice and information on using assistive technologies to support learners of all ages.

If you would like additional copies of this catalogue, or to discuss specific needs with one of our trained advisors, then please call Freephone: 0800 999 2620.



YOU

CONTENTS

WHAT IS REASONABLE ADJUSTMENT? HOW CAN ICT HELP?	4
ACCESSIBLE SOFTWARE HELPING YOU WITH READING AND WRITING	5
HELPING YOU WITH HEARING IMPAIRMENT	17
RECORDING, NOTE TAKING AND DAISY TOOLS	18
HELPING YOU WITH VISUAL IMPAIRMENT	19
ALTERNATIVE KEYBOARDS AND MICE	22
ACCESSORIES	26
HOW TO ORDER & CONTACT DETAILS	28

PRODUCT KEY

-  MAC
-  WINDOWS
-  CD
-  USB
-  SITE LICENCE
-  DOWNLOAD
-  INTERNET

WHAT IS REASONABLE ADJUSTMENT?

Legislation now places duties on educational institutions with respect to the provision offered to learners with special educational needs and / or disabilities.

All schools and colleges must make 'reasonable adjustments' to ensure that these learners are not put at a substantial disadvantage in using any facilities or resources - and that includes the use of Information and Communications Technology (ICT).

HOW CAN ICT HELP?

Information and Communications Technology can help all learners. Supportive word processing with built-in spellcheckers, word lists and speech feedback can aid in the development of literacy.

A topic list or word bank provides instant access to specialist vocabulary. By selecting whole words, learners can build up their writing skills.

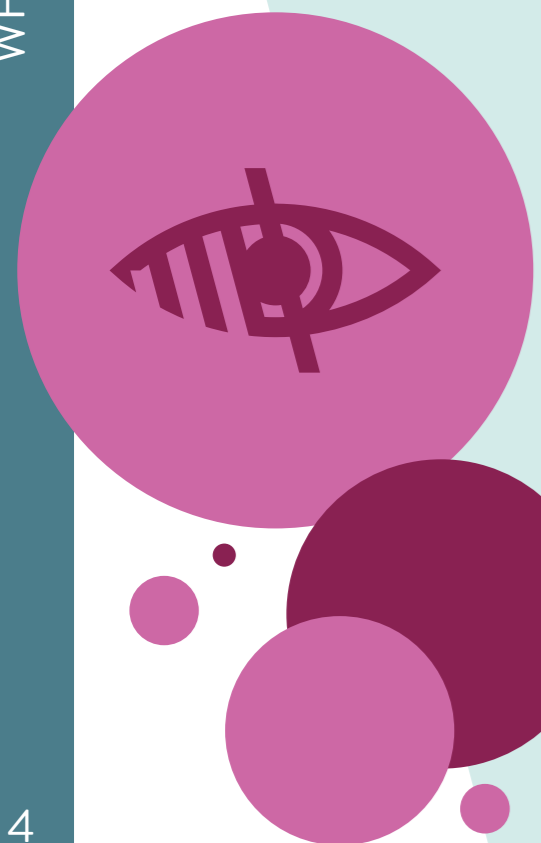
The use of overlay keyboards and on-screen grids, for whole-word, whole-phrase or even whole-sentence insertion, can also help.

Speech feedback offers additional support for accurate word processing and helps independent learning.

Software designed to reinforce spelling, memory or numeracy work, where the exercises target the teaching points in current classroom work, can be valuable for all learners.

Adventure games, subject specific programs and problem-solving software or hardware can encourage logic and thinking skills, decision making, organisational and planning skills. Problem-solving activities provide students with the opportunity to extend their thinking skills in a practical setting with immediate feedback.

WHY ADJUSTMENT NEEDED	ICT PROVISION
Dyslexia or other reading difficulties	Speech output or spellchecker, change in font colour
Poor motor skills	Alternative keyboard and/or mouse, word-prediction software, onscreen scanning systems
Visual-perceptual problems	Simplified presentation, or use of alternative such as symbols
Hearing difficulties	Technology to maximise hearing, and alternative sources of information about sounds
English not their first language	Translation of text, adding text-to-speech support or symbol alternatives
Visual impairment	Added screen-reader software, speech output, tactile output or Braille print, or changing the font size and colour



ACCESSIBLE SOFTWARE

ICT is an enabling technology and provides support for learners with specific difficulties, but it has to be accessible to be of use as a learning resource.

Software can allow a wide range of simple adjustments to the settings of a standard computer - changing the size or colour of text, the size and speed of the cursor, or adding text-to-speech support.

Use of subtitles can support learners with impaired hearing, just as screen enlargement software can benefit those with impaired vision.

For some people, using a standard mouse and/or keyboard is not suitable. There is a range of assistive technology available for learners with physical impairments including alternative keyboards, mice, joysticks and head pointers.

ICT can make the use of a computer not just a practical possibility but a positive means through which they can access the curriculum.

HELPING YOU WITH READING AND WRITING

Writing is a complex task. A word processor offers support to early writers, dyslexic pupils and those who struggle to control a pencil. For pupils with major physical impairments, severe dyslexia or impaired cognitive development, an on-screen grid can help them to communicate.

For writers whose ideas outstrip their ability to type, more specialised word processors - either talking or predictive - can be a major support.



INTRODUCTION TO THE LEARNING ACCESS SUITE

The Learning Access Suite is a unique collaboration between assistive software providers Nuance, Claro and Microlink PC.

Available on a subscription basis (per student per year), the suite offers software tools for students, teachers, administrators and home users, including students who are learning English as an additional language.

Replacing Mindfull is Claroldeas V2, the idea mapping software solution. Also included is WordBanks, the on-screen word banks software tool.

The Learning Access Suite will help schools meet the requirements of the single Equality Act 2010 and helps to provide more access to information and text. Pupils who have poor literacy skills, where English is not their first language, or with a visual impairment, will be able to access information, take notes, read web pages and write essays with greater ease. As well as supporting learners who struggle with print, the suite is proving popular for teaching and supporting English as a second language.



The Learning Access Suite can be installed on a school network allowing the software to be used on any computer or laptop. Once a school has subscribed, parents can buy Dragon and the other tools at a discounted price for home use.



LEARNING ACCESS SUITE

This package has everything needed to support learning at home, and includes:

- ClaroRead Standard V5.5, the reading and writing support tool.
- Lightning Plus with Speech magnifier and screen reader.
- ClaroView screen colour overlay tool.
- ScreenRuler V3 reading ruler.
- ScreenMarker reading and tracking tool.
- Claroldeas V2 concept mapper.
- ClaroLingo language assistant.
- ClaroCapture V2 study tool.
- ClaroWordBanks on-screen word banks software.

OPTIONAL EXTRAS

The following are available as optional extras in the Claro Learning Access Suite:

- Dragon NaturallySpeaking Pro V11 speech recognition software.
- 1 Year Dragon NaturallySpeaking Pro V11 support including maintenance and annual upgrade assurance.



“It is the strong belief of the British Dyslexia Association that technology plays a crucial role of releasing students from the strait-jacket of poor data literacy...and enables them to fly.”

Judi Stewart, former Chief Executive of the British Dyslexia Association.



CASE STUDY 10 - TALKING WORD PROCESSOR

Jonathan is a Year 5 pupil struggling to develop his spelling skills despite learning support. His reading skills are in advance of his spelling skills, so he is poorly motivated and frustrated. He was re-motivated after being introduced to a talking word processor, and now produces work of greater length, quality and accuracy. His behaviour, which had been a cause of concern, has improved and there is an increase in self-esteem. He is less reliant on adult support as the talking word processor has enabled him to correct more of his own work.

In a parallel course of action, Jonathan was introduced to a typing program at home. This involved daily ten-minute sessions using an age-appropriate typing package. He has improved his typing skills to the speed of his handwriting. He is encouraged to do his homework on his home computer, bringing to school his first and final drafts for comparison. He continues to have small-group teaching support, sometimes using spelling programs on the computer alongside more traditional methods.

SPEECH RECOGNITION DRAGON SOFTWARE - NUANCE

Speech recognition is an increasingly cost-effective tool for a wide range of students. It can generate an excitement for writing and learning in students who were previously unable to write or produce written work due to problems with learning or physical disabilities or other challenges. Dragon gives you the power to create documents, reports and emails three times faster than typing, with up to 99% accuracy.



A GREAT TOOL FOR TEACHERS

Dragon NaturallySpeaking allows teachers to read and respond to students' essays and assignments quickly and easily. One secondary school history teacher who uses Dragon decreased the time spent grading papers by 40 per cent. In addition, Dragon provides a permanent electronic copy of all his comments, valuable in writing both end-of-term evaluations and college recommendations.

WINDOWS VERSIONS AVAILABLE:

- DRAGON HOME
- DRAGON PROFESSIONAL
- DRAGON PREMIUM

SYSTEM REQUIREMENTS:

- OS: Windows XP onwards
- RAM: 2GB
- HDD: 2.5GB free space
- CPU: 1.6 dual core processor



MAC VERSIONS AVAILABLE:

- DICTATE 2.0

SYSTEM REQUIREMENTS:

- OS: 10.6 onwards



CASE STUDY - DRAGON

Thomas is a bright, 9 year old boy, who has difficulty putting his thoughts into words.

When introduced to a speech recognition program he began to develop his writing skills by using his voice.

His teacher also noted an improvement in his motivation to undertake written work and Thomas has found his written homework easier to complete and essays less time-consuming.

TEXT TO SPEECH

TEXTHELP READ & WRITE GOLD

A comprehensive literacy support tool, designed to help learners in mainstream classes to work more independently. It features an easy-to-use toolbar, text-to-speech, word prediction, homophone checking and screen masking to support dyslexic learners. Text help mobile has all the features of text help available on a USB stick.

AVAILABLE IN THE FOLLOWING VERSIONS:

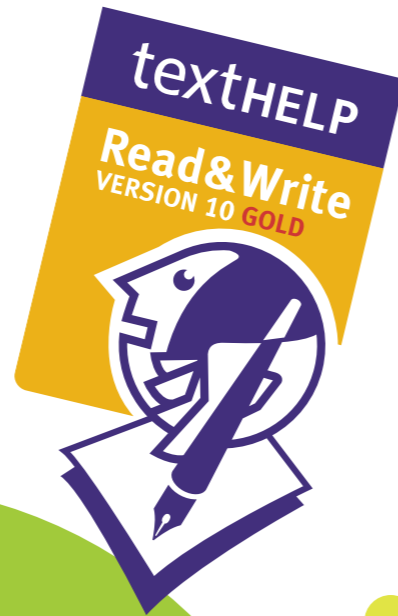
- TEXT HELP GOLD WIDOWS
- TEXT HELP GOLD MOBILE WINDOWS
- TEXT HELP GOLD MOBILE MAC
- TEXT HELP GOLD MAC

SYSTEM REQUIREMENTS:

OS: Windows XP SP3 onwards
 RAM: 1 GB HDD: 2 GB Free
 CPU: Pentium 4 2.4GHz.

MAC SYSTEM REQUIREMENTS:

OS: 10.4 onwards RAM: 512MB
 HDD: 1.5GB CPU: 1.83GHz



CASE STUDY: TEXTHELP

Amy is in Year 6 and has cerebral palsy. When younger, she used on-screen Clicker grids to cut down keystrokes and speed up recording. This is now too restricting as she has a large vocabulary, age-appropriate reading and wide curriculum needs. However, her typing is quite slow and she tires easily. She now uses TextHelp and the frequency lists have adjusted to her language. Her learning support assistant has created a dictionary for use in the class topic (Victorians). This has made recording much less tiring as she can obtain long words – such as Queen Victoria – with two keystrokes. Amy will transfer to secondary school next year and will use this software combination on a laptop which she will take home to complete her homework.



CLAROREAD

Effective multi-sensory support for reading and writing. Text-to-speech helps the learner to create, read and check text, with visual highlighting and a choice of eight voices. It also features a homophone checker. Dictionary and word prediction features.

SYSTEM REQUIREMENTS:

OS: Windows Vista SP2 32 bit or 64 bit
 RAM: 2GB
 HDD: 250MB
 CPU: 1.6GHz or equivalent



GINGER PREMIUM

A virtual English tutor that checks and corrects spelling and grammar automatically. It also has a text-to-speech reader that reads text aloud before and after Ginger corrections. Includes an error statistics reporting tool. Also available as standard version, which is an automatic spelling and grammar checker.

SYSTEM REQUIREMENTS:

OS: Windows XP onwards

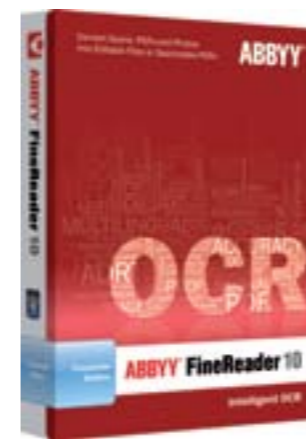


PLUSTEK OPTICBOOK 3600 SCANNER

OpticBook 3600 has provided you with a scanning solution which is perfect for capturing text from books right up to the spine due to its special book edge design. The result is clean and shadow-free text/images. You can combine multiple images into one file. Optical resolution is 1200 dpi x 1200 dpi, with 16 bit greyscale and 48-bit colour scanning. Bundles software includes ABBYY Finereader and NewSoft presto Image folio and page manager.

SYSTEM REQUIREMENTS:

OS: Windows XP onwards
 RAM: 128MB
 HDD: 500MB
 CPU: Pentium 2



ABBYY FINEREADER

Highly intelligent OCR (optical character recognition) software for text recognition and creating editable and searchable electronic files from scanned paper documents, PDFs and digital photographs. Unlock data in documents and images and transform them into manageable and accessible information.

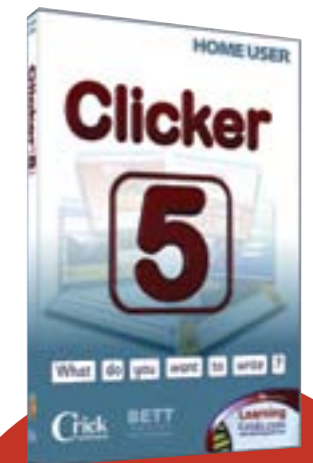
SYSTEM REQUIREMENTS:

OS: Windows Vista
 RAM: 512MB
 HDD: 650MB
 CPU: 1GHz



THE GRID 2

Allows people with limited or unclear speech to use a computer as a voice output communication aid, using symbols or text to build sentences. You can also access your Windows desktop and other programs, with the built-in Computer Control features.



CLICKER GRID SOFTWARE

Installed on over half a million school computers in the UK, Clicker provides support for reading and writing. Point-and-click access to whole words, phrases and pictures, and text-to-speech helps pupils review as they write.



CASE STUDY - CLICKER

Ann is in Year 9. She is a switch user who uses the keyboard grid in Clicker to record some information independently. This grid combination provides an on-screen scanning keyboard plus predictive word lists. Although this combination is faster than the keyboard alone, it is still tiring. Her Learning Support Assistant is able to understand her speech, so she normally uses a combination of amanuensis and scanning. Although she uses Clicker, the text is sent to Word for additional formatting, as this is the standard school word processor.

CO-WRITER SOFTWARE

A favourite for word prediction support and the industry-standard program that helps students write with correct grammar and spelling by using the context of a whole sentence. Wide range of topical dictionaries.

SYSTEM REQUIREMENTS:

OS: WINDOWS 2000 onwards
 RAM: 512MB HDD: 90MB CPU: 450MHZ

MAC

OS: 10.2 onwards RAM: 256MB
 HDD: 10MB CPU: G3



CASE STUDY - CO:WRITER

Daniel, in Year 10 of a mainstream comprehensive, has learning, literacy and behavioural difficulties and needs individual support within the SEN department. He has poor concentration and his keyboard and writing skills are poor. His spelling is phonetic non-standard and sometimes bizarre. He quickly loses motivation if he cannot get something down on paper.

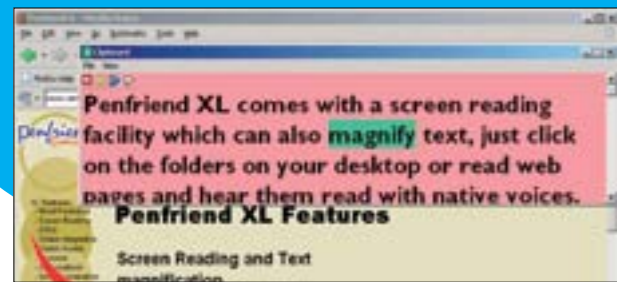
Co:Writer helps Daniel as he can start a word and then either spot the word he wants in the list or listen to the choices – and usually he will get the whole word from one or two keystrokes.

USING A TALKING WORD PROCESSOR

Research shows that speech-enhanced word processors have made a significant contribution to supporting students with literacy difficulties. Auditory feedback, where the word processor 'speaks' each letter or word, enables improved access for many pupils, including those with visual and specific learning difficulties, including dyslexia. Most talking word processors have speaking menus and toolbars to aid navigation.

CASE STUDY – PENFRIEND

Robert is a Year 4 pupil and is fully integrated into a mainstream rural school. He has a range of difficulties, mainly Asperger's type. He has poor attention skills, is easily distracted and becomes disorientated very easily. He used Penfriend to access word processing, which was very successful compared with normal keyboard access. He maintained his visual attention and recorded more effectively. He found the process far easier and less frustrating, so he was well motivated and also well behaved.



WORD SHARK SOFTWARE

Combines the excitement of computer games with the development of literacy skills. It has 55 games to develop reading and spelling, using 9,000 pre-recorded words grouped in lists using a phonics-based approach. Words can be added to provide tailored support.

SYSTEM REQUIREMENTS:
OS: Windows XP onwards
RAM: 256MB
HDD: 500MB
CPU: 50MHz

MAC:
OS: 10.3 onwards



PUNCTUATE PLUS SOFTWARE

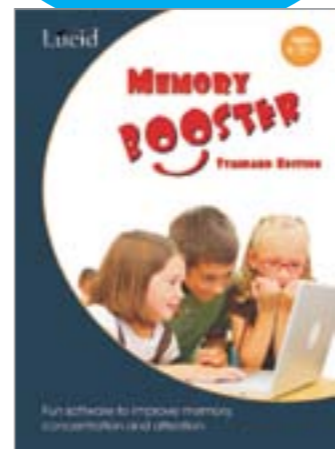
Offers a comprehensive range of punctuation exercises designed for use by tutors working with students with dyslexia or other literacy problems. New exercises can be created to give more practice where needed.

SYSTEM REQUIREMENTS:
OS: Windows 98 onwards



PENFRIEND SOFTWARE

Benefits users with dyslexia, visual impairment or physical disabilities, allowing them to write faster by predicting the next word they want to type, and promoting better spelling and grammar. Comes on a USB memory stick, no installation required.



MEMORY BOOSTER

An activity-based program designed to develop memory skills. It automatically adapts to each child's rate of learning, gradually stretching their skills through structured practice. Allows up to 28 registered users.

SYSTEM REQUIREMENTS:
OS: Windows XP onwards



MEMORY BOOSTER - HOME

A maximum of four players, this edition runs in automatic adaptivity mode only but is an ideal solution for home use, as it automatically adapts to each child's rate of learning.

SYSTEM REQUIREMENTS:
OS: Windows XP onwards



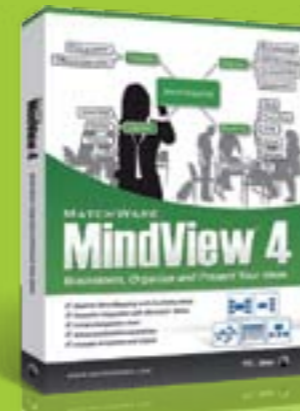
SPARK SPACE ESSAY WRITER

Essay Writer is a new program that helps to produce an essay in half the time. It allows the student to collect and organise thoughts in a visual way and then add text to create a complete essay. Essay Writer is particularly useful for the dyslexic student.



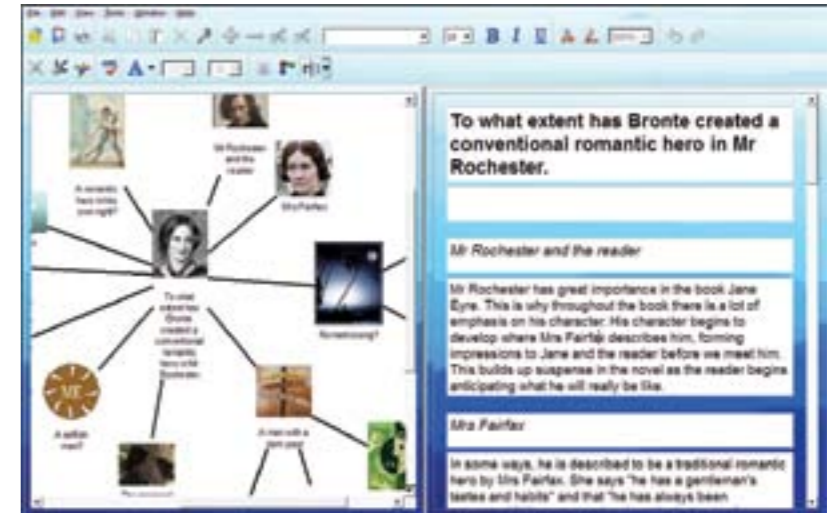
MIND VIEW VERSION 4

MatchWare MindView is a comprehensive, visual learning tool designed to help you develop and organize ideas. Based on the proven Mind Mapping® theory, it enhances creativity, clarifies thinking and improves memory.



CONCEPT MAPPING SOFTWARE

Concept mapping software helps learners to structure, visualise and classify ideas, and can be used as an aid to study, problem solving, decision-making and writing. Learners can then use the maps as revision aids, storyboards for structuring essays and project planning. A mind-map uses only keywords to prompt memory and association, and encourages the use of colour and imagery, to provide a better way to organise and assimilate information.



INSPIRATION VERSION 9

Helps with visual mapping, outlining, writing and making presentations. It can help learners to explore ideas, structure their thoughts, take notes, organise information, and structure writing for plans, papers and reports. Built-in text-to-speech and an automatic spell checker.

SYSTEM REQUIREMENTS:
OS: Windows 98 onwards
RAM: 256MB CPU: 450MHz

MAC:
OS: 10.3 onwards RAM: 512MB
CPU: G4 700MHz

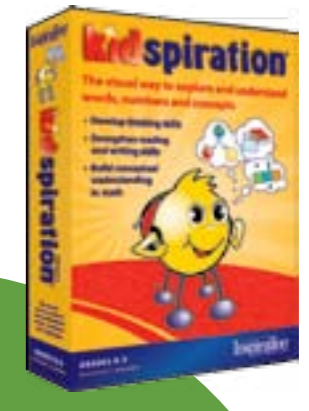


KIDSPIRATION 3

A cross-curricular visual workspace for K-5 learners. Visual tools combine pictures, text, numbers and spoken words to develop vocabulary, word recognition, comprehension, reasoning and problem solving skills. Symbol library with 3000+ entries, integrated dictionary and thesaurus.

SYSTEM REQUIREMENTS:
OS: Windows 98 onwards
RAM: 128MB HDD: 250MB CPU: 266MHz

MAC:
OS: 10.2.8 onwards RAM: 192MB
CPU: G3 30MHz





READING PEN TS

Enhance reading skills by scanning and inserting any text using the touch screen and virtual keyboard. Select words to hear them spoken aloud with definitions from the Concise Oxford English Dictionary. Innovative portable learning tools for students of a second language and for people with reading difficulties (such as dyslexia). Adapted for readers of all ages, these tools provide reading autonomy and fluency, and enhance text comprehension.

WIZCOM SUPERPEN PROFESSIONAL

A scanning pen that reads a word aloud, together with its definition, and a note-taking device. In dictionary mode it produces audio pronunciation in English. Definitions, including idioms and phrases, from nine professional dictionaries. Can scan, store and transfer up to 500 pages of editable text to a PC.

READING PEN (OXFORD DICTIONARY)

Scan it over a typed word and it speaks aloud, or to headphones. The Reading Pen features the Concise Oxford English Dictionary.



LIVESCRIBE A5 NOTEBOOK

80 college-ruled perforated sheets of dot paper for the Livescribe, Pulse and echo smartpens. Note for Pulse users only: this product requires the Pulse smartpen firmware version 1.6 or later; dock your Pulse smartpen to download and install the latest software

LIVESCRIBE 4GB ECHO SMARTPEN

Not only captures what you write, but also records what you hear, offering great support for learners who struggle to take notes. Notes and audio can be transferred to computer, edited and saved as PDF files.



SUPERIOR YORO PEN

Recommended by hand writing experts as fingers can't slide down onto the point, and its angle means that the user can read as they write. It also helps left-handers to avoid smudging. Adjustable grip.

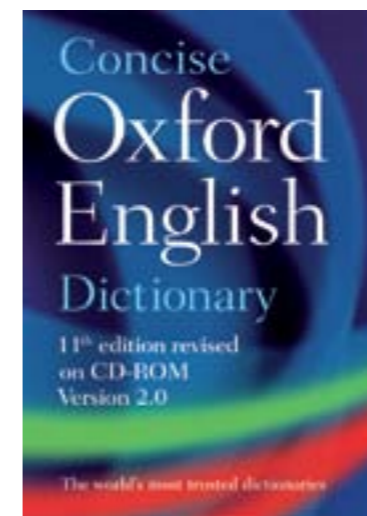
KAZ TYPING TUTOR

Using KAZ Typing Tutor's unique accelerated learning system, you learn to touch type correctly and can master your keyboard in minutes instead of hours.



CONCISE OXFORD DICTIONARY

The 11th edition of the world-famous Concise Oxford English Dictionary provides an authoritative description of the English language. With instant access to over 240,000 words, phrases, and definitions, this program is ideal for anyone needing an up-to-date dictionary of current English on their PC for study, work, or home.



TEN THUMBS TYPING TUTOR

The award-winning tutor is the easy and fun way to get typing. Learn the proper way to type without looking at the keys. There are two games to help, plus the option of typing the lyrics to favourite iTunes. Version 12 available in August 2011.



PEN/PENCIL ASSORTED GRIP PACK

- Pack contains x 1 of each:
- Ridged Comfort Pencil Grip
- Stubbi Pencil Grip
- Solo Pencil Grip
- Standard Pencil Grip
- Jumbo Pencil / Pen Grip
- Tri-go Pencil Grip
- EzGrip Pencil Grip
- Airgrip Pencil Grip
- Faber-Castell 2001 Grip HB Pencil
- Faber-Castell Jumbo Grip Pencil



FIVE FINGER TYPIST

Typing tutor that teaches one-handed touch typing with either hand on the standard QWERTY keyboard. Full use of the keyboard is covered in 21 lessons. Support for learners with impaired vision with screen font sizes as large as 48 point.



ENGLISHTYPE JUNIOR

Provides a multi-sensory approach, as instructions are spoken and written, and its vocabulary is graded to match the National Curriculum. There are also high-frequency non-phonetic words, letter combinations, homophones and phonemes, so parents can help children practise reading and typing at home.

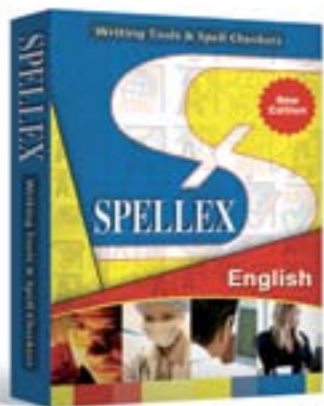




SPELL CATCHER SOFTWARE

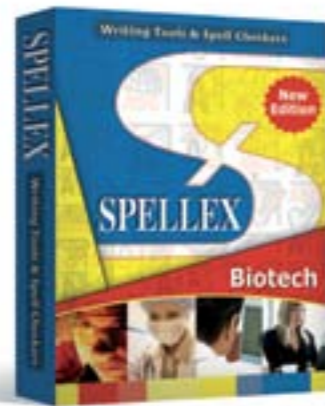
Provides all-in-one spell checking and writing support. It detects errors as you type, and automatically fixes common typos on word processor, spreadsheet or email. It can also expand 'shorthand' notes.

MAC: OS: 10.4.3 onwards



SPELLEX COMPREHENSIVE

Claims to be the most accurate, up-to-date and complete UK English spelling checker software ever. It contains more than 130,000 terms from business, technology, finance, law and medicine not found in other spell checkers.



SPELLEX BIOTECH SOFTWARE

Turns basic English spell checkers into a bioscience word expert to help students master agronomy, biochemistry, bioinformatics, biophysics, ecology, microbiology, organic chemistry, pharmacology and more. Contains more than 130,000 biotechnical terms.



INDUCTEL DICTIONARY SOFTWARE

A combined dictionary and spell checker, it contains more than 120,000 definitions from biology, chemistry, physics, electronics, computer science and mechanical design. You can search using full words, partial words, wildcards and Boolean search terms.

SYSTEM REQUIREMENTS:

OS: Windows 2000
RAM: 32MB
HDD: 1.6GB
CPU: Pentium

MAC:
OS: 10.4 onwards
HDD: 40MB



SPARK SPACE SPELL XL

Spell XL improves spelling, grammar and writing in English for students. It uses full multimedia visualisation, patterns and colour to allow optimal learning in the quickest time. Designed for students with dyslexia.



LEARNER PROFILER

On-line support to identify and analyse specific learning disabilities, and then provide advice, support and guidance based on the needs of the individual learner. Cost effective packages available and Learner Profiler can also be tailored to client needs.



FRANKLIN DMQ 570 ELECTRONIC COLLINS DICTIONARY THESAURUS

A portable spelling tool, with large clear keys and a magnetic lid with durable hinges. Definitions for over 250,000 words together with a 'confusables' function to help with homophones.

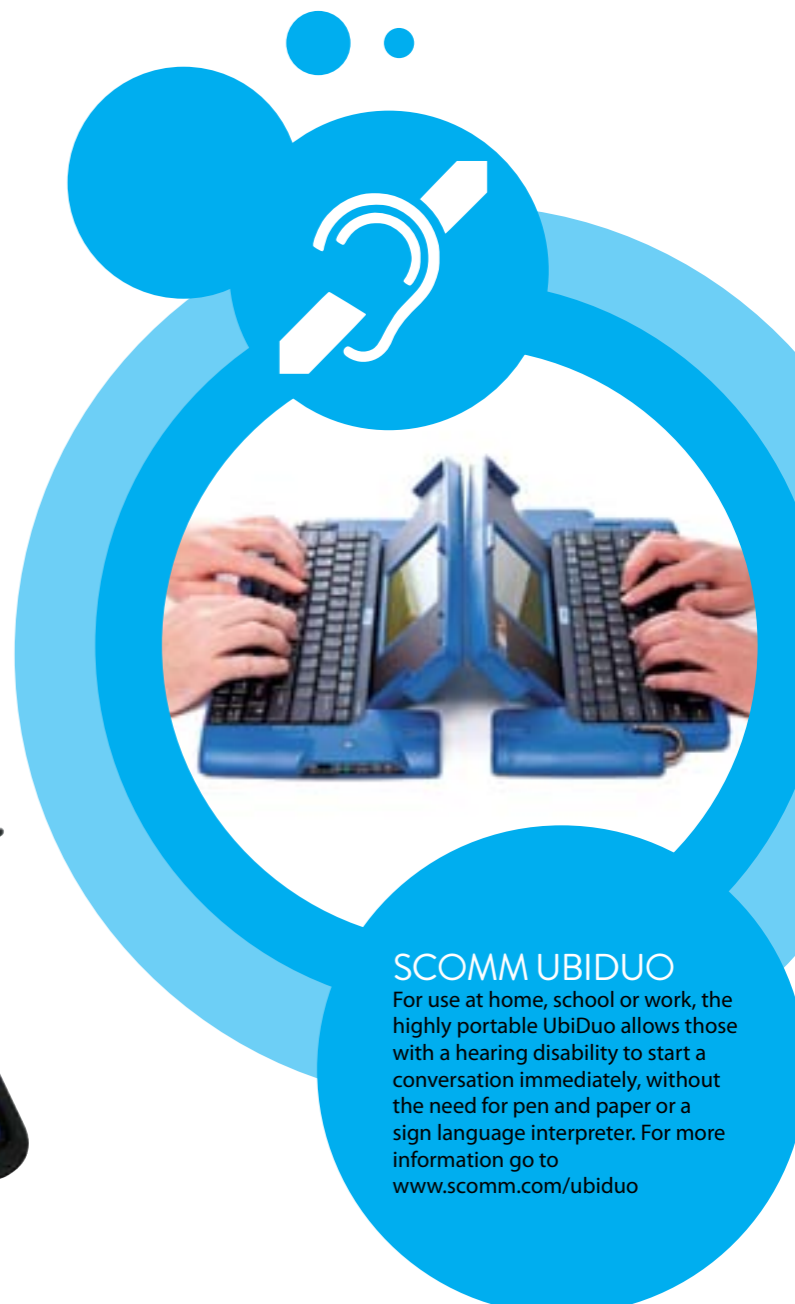


FRANKLIN DMQ-119 DICTIONARY AND THESAURUS - EXPRESS EDITION

Has over 118,000 words and definitions, a thesaurus and tools for solving word puzzles. Works on phonetic spell correction, so weak spellers can find the word they want, and has 500,000 synonyms and antonyms to help extend vocabulary.

DMQ 1870 ELECTRONIC COLLINS DICTIONARY / THESAURUS

Learners have access to over 500,000 words, can search over 40 subjects and access phonetic spell correction for 180,000 words. It also has 6,000 references to everyday idioms in British and American English, and a wide range of learning tools, tests and quizzes.



SCOMM UBIDUO

For use at home, school or work, the highly portable UbiDuo allows those with a hearing disability to start a conversation immediately, without the need for pen and paper or a sign language interpreter. For more information go to www.scomm.com/ubiduo



APPLE IPOD TOUCH 8 GB (4TH GEN)

Touch-screen technology for users who struggle with reading words, magnification, voice controlled functions, and VoiceOver gesture-based screen reader in over 30 languages.



OLYMPUS ME-32 COMPACT ZOOM MICROPHONE

Small and lightweight microphone for precise recording in the classroom with a voice recorder. It has its own stand, a screen to cut down wind noise when used outdoors, and a versatile zoom microphone, ideal for mobile lecture and small meeting recordings.



HIMS BOOK SENSE XT VERSION

A lightweight audio book player that enables print-disabled learners to access textbooks, course materials and reading for pleasure. Built-in text-to-speech engine. Compatible with a wide range of audio formats including DAISY.

USING A TALKING WORD PROCESSOR

Information and Communication Technologies can play a vital role in supporting pupils with a physical or motor impairment or severe dyslexia.

Predictive word processors can offer support, particularly for secondary students who need specific vocabulary for subjects such as science and geography, or a foreign language.

Supportive word processing with built-in spell checkers, word lists and speech feedback can aid in the development of literacy in learners with Moderate Learning Difficulties. The use of overlay keyboards and on-screen grids, for whole-word, whole-phrase or even whole-sentence insertion can also help. A word processor with a topic list or word bank can provide instant access to a specialist vocabulary. By selecting whole words, learners can build up their writing skills with ease. Speech feedback can offer additional support for accurate word processing, and help independent learning.



OLYMPUS DM-450 DIGITAL VOICE RECORDER

Easy recording, playback and file organisation for lesson or homework notes, and music, audio books and podcasts. Features include Audible, DAISY support, voice guidance and tactile buttons. Reads text files in English, German, French, Spanish, Italian and Russian. 51 hours battery life.



OLYMPUS DM-5 DIGITAL VOICE RECORDER

CD-quality multi-format playback and recording. Features include voice guidance, voice commands, text to speech and DAISY 2.02. Able to handle audio recordings, music, audio books, podcasts and images (up to 8GB flash memory). Multilingual text to speech.



HUMANWARE VICTOR STREAM PORTABLE DAISY PLAYER

Enables visually impaired learners to read and navigate through complex school textbooks, as well as novels and magazines. Its built-in text-to-speech can also read books in text formats such as Bookshare. Removable SD card for storage.

AUDIO NOTETAKER 2

Can record or import from a voice recorder, and enables learners to annotate their notes and add images and presentation slides. Provides file management and keyword searching to help organise audio files.



CERIUM A4 COLOUR OVERLAYS

Coloured A4 sheets of robust transparent plastic which can be used for all reading tasks. Available individually or in combination to suit the reader's needs. Available in ten colours, please call for options and combinations.

IRLEN OVERLAYS

Coloured acetate overlays to make reading easier in cases of Scotopic Sensitivity, or Irlen Syndrome. Each sheet has a glare and non-glare side. Two sets of 10 (A5 9" x 12"). Ten colours available, please call for options and combinations.

CROSSBOW OVERLAYS

Coloured A4 size overlays for occasions when use of a reading ruler is not appropriate. Ten colours available.

CROSSBOW VIRTUAL READING RULER 3

Works like an ordinary reading ruler, removing screen glare and stabilising the print on any area of the page. Can mark the line or paragraph being read. Customisable colour options.



COLOUR EXPLORER SOFTWARE

Allows the best combinations of background colour, text colour and contrast. Once set they can be applied to all documents.

CROSSBOW VISUAL STRESS ASSESSMENT PACK WITH COLOURED OVERLAYS

To stop text swimming or blurring. The Visual Stress Assessment Pack contains A5 overlays in 12 colours equally positioned around colour space.



SENSEVIEW – VI EQUIPMENT

Senseview magnifiers offer features such as high magnification rates, diverse colour modes and line and window markers. They are designed with ergonomic comfort in mind – optimising reading and writing for those with visual impairments.



SENSEVIEW P350

The size of a pack of cards, but offers magnification up to 10.5x. It weighs only 151g. A 3.4 inch AMOLED screen produces a clear, bright image and a 170 degree viewing angle.



SENSEVIEW DUO PORTABLE CCTV

Enables visually impaired learners to magnify not only what's on their desk but also on the whiteboard. Duo has built-in distance and close-up cameras. Seven different viewing modes. Stores 20 images.



SENSEVIEW P430

This portable magnifier has four levels of brightness and six viewing modes. It offers 'still shot' functionality allowing the capture of images normally too far away for handheld magnifiers. Magnifies from 4x to 22.5x.



HIMS SENSEVIEW D650 DESKTOP MAGNIFIER WITH 22" MONITOR

Also available in 19", it offers high magnification rates, diverse colour modes and line and window markers to help access to textbooks, worksheets and the user's own writing. The monitor offers high contrast. Magnification up to 74x.



SUPERNOVA ACCESS SUITE

SuperNova is a full screen reader offering magnification, speech and Braille support, giving people with visual impairment the freedom to access Windows in the way that suits them best. Developed for all visually impaired users, from low vision to blind. It is ideal for both individual users, who experience varying or deteriorating eye conditions during a working day or for institutional settings, such as in school or work, that need to provide solutions for visually impaired groups with a range of sight difficulties.

SYSTEM REQUIREMENTS:

OS: Windows 7 RAM: 2GB HDD: 80GB CPU: 2GHz dual core



JAWS PROFESSIONAL 12 SCREEN READER

JAWS®, the world's most popular screen reader. Developed for computer users whose vision loss prevents them from seeing screen content, JAWS reads aloud what's on the PC screen. JAWS enables you to work with Lotus Symphony, a suite of IBM® tools for word processing, spread sheets, and presentation creation and with Lotus Notes® by IBM. JAWS is also compatible with Microsoft® Office Suite, MSN Messenger®, Corel® WordPerfect, Adobe Acrobat Reader, Internet Explorer™, Firefox™ - and many more applications that are used on a regular basis on the job and in school.

SYSTEM REQUIREMENTS:

OS: Windows 7
RAM: 2GB
HDD: 200MB
CPU: 1.6GHz dual core



HIMS BRAILLE SENSE PLUS QWERTY NOTETAKER

Enables users to word process, access the web and send and receive emails using real-time translation between Braille and text. It supports Daisy, ANSI/NISO, NIMAS and Bookshare formats amongst others. It can play saved playlists.



ZOOMTEXT MAGNIFIER

Enlarges and enhances computer screens up to 36 times with eight different zoom windows. Special effects include colour dyes, two-colour modes and replacement of problem colours. Text Finder search feature. Also available on USB which allows learners to always have Zoomtext to hand.

SYSTEM REQUIREMENTS:

OS: Windows Vista (32bit and 64bit)
RAM: 1GB
HDD: 25MB
CPU: 1.6GHz dual core



HIMS VOICE SENSE BRAILLE NOTETAKER

Users can word process, email, surf the web, and listen to music and talking books. Built-in GPS receiver and electronic compass. 4GB memory. Information can be shown in text on the LCD window for use by a sighted assistant.



DOLPHIN EASY CONVERTER

EasyConverter empowers you to make reading materials and other information accessible to people with visual impairments and dyslexia. You can quickly and easily create accessible Word docs, large print, MP3 audio, DAISY talking books and Braille. Easy to learn if you are new to creating accessible documents. EasyConverter is ideal for educational institutions looking for a flexible accessible format creation tool.

SYSTEM REQUIREMENTS:

OS: Windows Vista
RAM: 512MB HDD: 500MB
CPU: Pentium 4 2GHz



ZOOMTEXT MAGNIFIER READER

Zoomtext Magnifier/Reader is a fully integrated magnification and screen reading program that enlarges, enhances and reads aloud everything on the computer screen.

SYSTEM REQUIREMENTS:

OS: Windows Vista (32bit and 64bit)
RAM: 1GB
CPU: 1.6GHz dual core



HOW TO USE TECHNOLOGY TO ACCESS THE CURRICULUM

There are a variety of devices that can help all pupils, including those with special educational needs, to access computers and the full curriculum.

They include:

- Switches
- Scanning software
- Touch monitors, touchscreens and touch windows
- Mouse alternatives – tracker balls and joysticks
- Specialised keyboards

MOUSE ALTERNATIVES: TRACKER BALLS, ROLLER BALLS AND JOYSTICKS

Useful for those with limited movement, the devices offer varied facilities and can be optimised for individual pupils whose personal settings can be recorded.

TOUCH MONITORS AND SCREENS

Touch screen technology can be very useful for pupils who have poor fine motor control, struggle to use a mouse, or cannot understand the relationship between the mouse and movement on screen. Many learners find touch screens intuitive and easy to use. For some children with limited arm movement, the screen can be placed in a frame so it is facing upwards and they can make smaller movements with their hands at waist or seat level.

ERGONOMIC PERIPHERALS

Good ergonomic practice early in life may help prevent RSI, headaches, backaches and neck pain in later years.



GOLDTOUCH GO KEYBOARD

Weighing only 450g (1lb) the Goldtouch Go is the size of a 14" laptop keyboard. It offers all the features of the full-size ergonomic keyboard.



GOLDTOUCH NUMERIC KEYBOARD

The numeric keypad complements the adjustable ergonomic keyboard and allows for a flexible work area.

MONSTER KEYBOARDS

Sturdy, with high visibility large key tops, the KeyMonster keyboard is ideal for children and adults with fine motor control problems or tremors. Available in a range of colour options with the choice of upper or lower case letters on keys. Please see price list at the back for different options available.



GOLDTOUCH ADJUSTABLE KEYBOARD

Designed to provide both flexibility and support, its two sections can be adjusted horizontally and vertically to suit individual requirements. The soft key-touch means reduced effort.

(Windows and Mac versions available)



DTX ERGONOMIC PRECISION MOUSE

The ergonomic mouse enables users to operate in a more vertical wrist posture while allowing the hand to work in the precision grip. Right- or left-handed.



MITSUMI STANDARD GUARDED KEYBOARD

A quality keyboard and keyguard for the price of a guard alone. This can be used with any PC computer, and has a standard USB connector and a PS2 adaptor.



MICROSOFT NATURAL ERGONOMIC 7000

The innovative shape of this keyboard encourages a more natural hand, wrist and forearm posture. Both keyboard and mouse are wireless, and the ergonomic mouse enables four-way scrolling.



EVOLUENT LEFT/RIGHT HANDED VERTICAL MICE

Allows control without the need for wrist and arm twisting. It is wireless, and has five programmable buttons.

MALTRON SINGLE HANDED KEYBOARD

The shape and letter layout of these single-hand keyboards take into account the limited number of keys that can be accessed quickly and comfortably using one hand, left and right handed models available.



LOGITECH OPTICAL MARBLE MOUSE

Combines the familiarity of a mouse with the convenience of trackball navigation. It can be used in either hand, and has forward and backward buttons to support Web navigation.



ORIGIN HEADMOUSE EXTREME

Designed for users who are unable to use their hands, and translates head movements into proportional movements of the mouse pointer on screen.

SMARTNAV HANDS FREE MOUSE

Natural Point's SmartNav 4 is a reliable and accurate, hands-free mouse alternative that allows complete control of a computer by naturally moving the head.



KENSINGTON EXPERT OPTICAL TRACKBALL

Uses Kensington's DiamondEye optical technology for smooth, precise cursor movement. The large ball helps to provide maximum control.

OPTIMAX WIRELESS JOYSTICK

Ideal for users with motor skill difficulties, and comes with a choice of three different handles to give precise tracking and cursor control. Ideal for use in group or classroom sessions.



TRAXSYS JOYSTICK

Comes with interchangeable T-bar and foam ball handles, and needs no driver software. There are colour-coded switch sockets and buttons to help learners spot which one to press.



TRAXSYS ROLLER MOUSE

Incorporates a latching drag key, three colour-coded jack sockets for external switches, and USB/PS2 compatibility. No additional software needed.



TASH BUDDY BUTTON

A reliable, durable, colourful switch, with auditory and tactile feedback.



BIG RED TWIST

The Big Red twist offers the original Big Red's 5-inch activation surface with tactile and auditory feedback, but with a twist.



FELLOWES WEIGHTED COPY HOLDER
This stand offers plenty of flexibility.

KENSINGTON EASYRIDER LAPTOP STAND
Enables users to alter the angle of a notebook screen and keyboard



POSTURITE MINI WRITING BOARD
Helps users to read and write at the angle that suits them.



ABLE TABLE BOOK AND LAPTOP HOLDER
A versatile over-the-lap table, which adjusts up or down, side to side and tilts.



BAKKERELKHUIZEN READ WRITE WRITING SLOPE
Convert any table into a sturdy writing desk at the angle that suits you.



4" CIRCULAR LUMBAR ROLL
Support when and where you need it in the home, car or office.



MEDESIGN BACKFRIEND DOUBLE PADDED
A combined back rest and seat base which can be used in any seat or chair, including cars.



KENSINGTON CONTOUR ROLLER CASE FOR 17" NOTEBOOKS
This laptop case has a handle, shoulder strap and wheels for real mobility.



FOOTMATE FOOTREST HEIGHT ADJUSTABLE ANTI-SKID
Ideal for working at a desk or a computer.



TECHAIR 3509 GREY/GREEN LAPTOP SHOULDER BAG
A cool and stylish messenger with zipped main compartment and document-friendly sections.



TARGUS CARRY CASE
Designed for notebook computers with screens up to 15.4" and related accessories with shoulder strap.

HOW TO PLACE YOUR ORDER

PHONE

Freephone 0800 999 2620
Mobile 0330 555 0999
Fax 023 8024 0310

EMAIL

csa@microlinkpc.com

ONLINE

www.microlinkpc.com

POST

Microlink PC (UK) Ltd,
Microlink House, Brickfield Lane,
Chandlers Ford, Hampshire SO53 4DP

ORDER FORM

In the centre of this catalogue